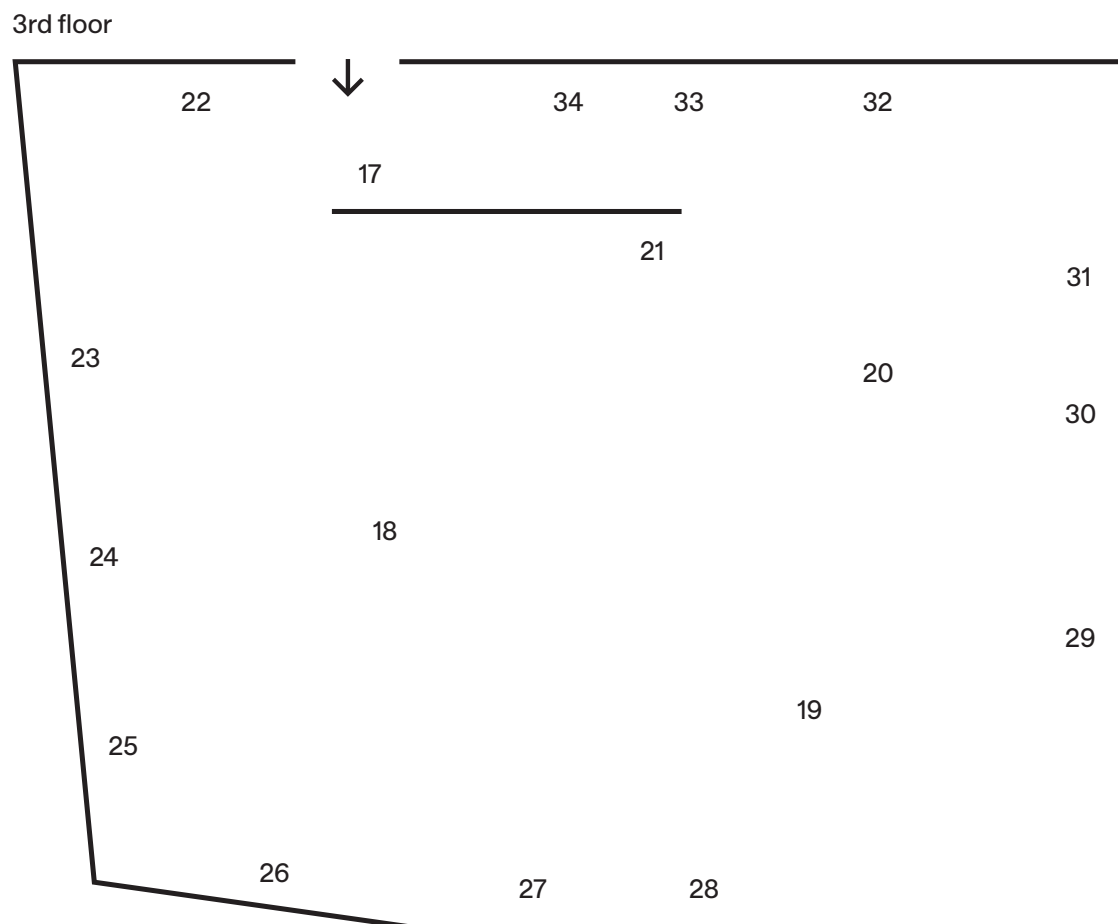
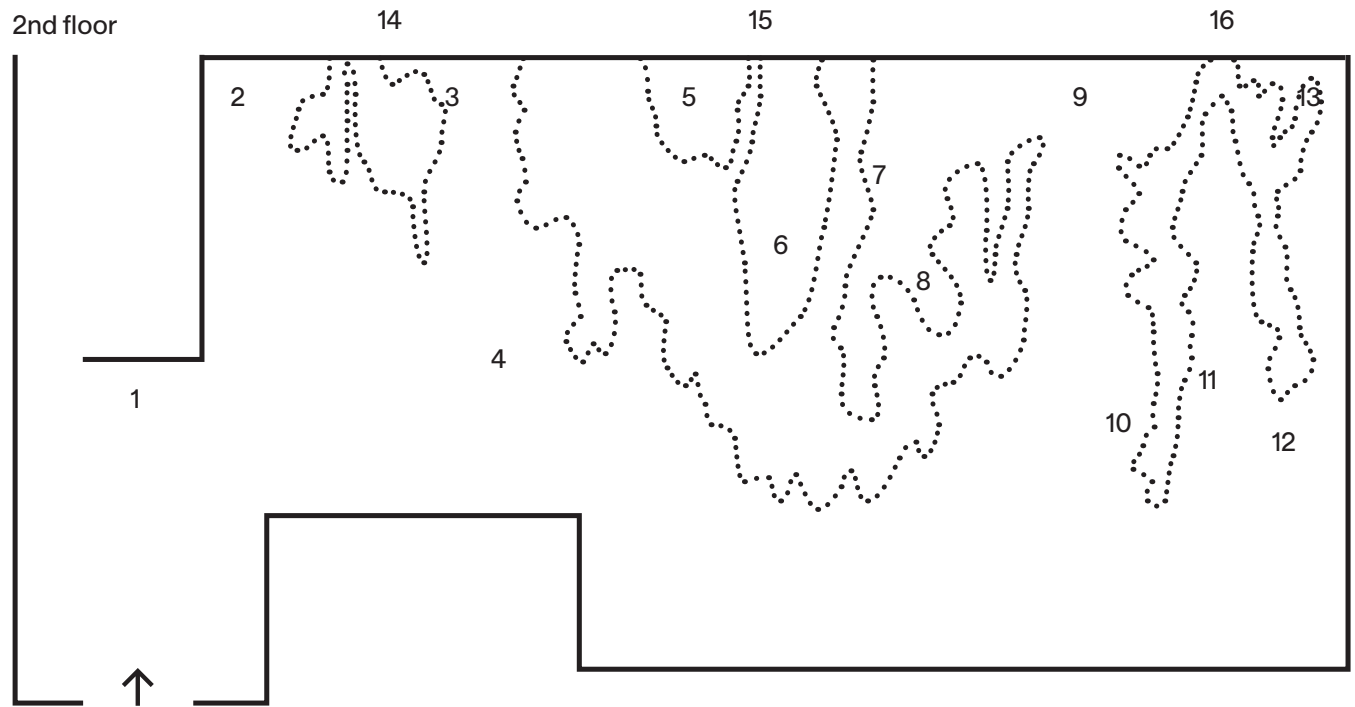


Liz Larner below above 11.06.–18.09.2022



Kunsthalle
Zürich

Limmatstrasse 270
CH-8005 Zürich

- 1 *Asteroid BJMQ*, 2021
Keramik glasiert / Ceramic, glaze
81.3 × 53.3 × 61 cm
- 2 *Asteroid Ida*, 2021
Keramik glasiert / Ceramic, glaze
74.9 × 48.3 × 49.5 cm
- 3 *Asteroid (1998 OR2)*, 2021
Keramik glasiert / Ceramic, glaze
72.4 × 61 × 55.9 cm
- 4 *Asteroid (V. Woolf)*, 2020
Keramik glasiert, Steine, Mineralien /
Ceramic, glaze, stones, minerals
50.2 × 58.4 × 53.3 cm
- 5 *Asteroid Pallas*, 2021
Keramik glasiert / Ceramic, glaze
71.1 × 61 × 58.4 cm
- 6 *Asteroid (Spock)*, 2020
Keramik glasiert / Ceramic, glaze
53.3 × 72.4 × 54.6 cm
Petch Osathanugrah – Dib Collection
- 7 *Asteroid 2002AJ129*, 2021
Keramik glasiert / Ceramic, glaze
77.5 × 78.7 × 61 cm
- 8 *Asteroid (Psyche)*, 2022
Keramik glasiert / Ceramic, glaze
79 × 65 × 60 cm
- 9 *Asteroid (Eros)*, 2022
Keramik glasiert / Ceramic, glaze
54.6 × 109.2 × 53.3
- 10 *Asteroid (67P/Churyumov-Gerasimenko)*, 2021
Keramik glasiert / Ceramic, glaze
76.2 × 66 × 53.3 cm
- 11 *Asteroid (I 2001 FO32)*, 2021
Keramik glasiert / Ceramic, glaze
76.2 × 36.8 × 48.3 cm
- 12 *Asteroid Osiris*, 2021
Keramik glasiert / Ceramic, glaze
61 × 94 × 76.2 cm
- 13 *Asteroid (Ceres)*, 2021
Keramik glasiert / Ceramic, glaze
71.1 × 78.7 × 63.5 cm
- 14 *Meerschaum Drift (Black)*,
2020–2021
Plastik / Plastic
65 × 568 × 406 cm
- 15 *Meerschaum Drift (Green)*,
2020–2021
Plastik / Plastic
1617 × 943 × 72 cm
- 16 *Meerschaum Drift (Blue)*,
2020–2021
Plastik / Plastic
94 × 609.6 × 880.7 cm
- 17 *Cultures*, 1988
Petrischalen, Bakterienkultur / Petri
dishes, bacterial culture
Grösse variabel / Dimensions variable
(zehn Petrischalen je 10 × 2,3 cm, eine
Petrischale 15 × 2,3 cm / Ten petri
dishes each 10 × 2,3 cm, one petri dish
15 × 3 cm)
Sammlung Pakesch, Lichtenberg
- 18 *Corridor Orange/Blue*, 1991
Metall, Holz, Autolack, Stoff,
Edelstahl, Stahl / Metal, wood, car
paint, fabric, stainless steel, steel
335.3 × 411.5 × 121.9 cm, Grösse
variabel / Dimensions variable
Courtesy Regen Projects, Los Angeles
- 19 *Hands*, 1994
19 Hände, Hohl-guss, Kette / 19 hands,
hollow cast pewter, chain
Grösse variabel / Dimensions variable
Collection Jennifer Flay, Paris
- 20 *X*, 2013
Polierter gegossener Edelstahl /
Mirror polished cast stainless steel
138.7 × 303.5 × 238.8 cm
- 21 *You might have to live like a
refugee*, 2019
Bronze patiniert / Patinated bronze
27.94 × 11.43 × 15.24 cm
Private collection
- 22 *xvii (caesura)*, 2015
Keramik, Epoxid, Ölfarbe / Ceramic,
epoxy, oil paint
55.2 × 94.6 × 26 cm
- 23 *i (inflexion)*, 2013–2015
Keramik, Epoxid und
Pigmente / Ceramic, epoxy, pigment
45.7 × 98.7 × 24.4 cm
- 24 *O Shadow*, 2020
Glasierte Keramik / Ceramic, glaze
52.1 × 79.4 × 25.4 cm
- 25 *ii (inflexion)*, 2013–2015
Keramik, Epoxid, Pigmente / Ceramic,
epoxy, pigment
46.4 × 85.7 × 26.7 cm
- 26 *Liken*, 2020
Glasierte Keramik / Ceramic, glaze
48.9 × 66 × 26.7 cm
- 27 *Blackbird (inflexion)*, 2020
Glasierte Keramik / Ceramic, glaze
53.3 × 86.4 × 15.2 cm
- 28 *ii (calefaction)*, 2014–2015
Glasierte Keramik, Steine, Mineralien /
Ceramic, glaze, stones, minerals
50.2 × 87.6 × 15.9 cm
Private collection. Courtesy Galerie
Max Hetzler, Berlin | Paris | London
- 29 *iii (calefaction)*, 2015
Glasierte Keramik, Steine, Mineralien /
Ceramic, glaze, stones, minerals
54 × 88.9 × 20.3 cm
- 30 *Striae*, 2020
Glasierte Keramik / Ceramic, glaze
50.2 × 84.5 × 25.4 cm
- 31 *i (porcelain melt)*, 2015
Keramik, Epoxid / Ceramic, epoxy
53.3 × 85.1 × 23.5 cm
- 32 *DIFFRACTOR*, 2017
Keramik glasiert / Ceramic, glaze
53.7 × 90.8 × 24.8 cm
Alex Hank Collection, Gsteig
- 33 *glass nimbus*, 2021
Keramik glasiert, Glas / ceramic, glaze
and glass
71.1 × 97.8 × 21 cm
- 34 *v (subduction)*, 2014–15
Keramik, Epoxid, Pigmente, Steine,
Mineralien / Ceramic, epoxy, pigment,
stones, minerals
52.7 × 99.7 × 28.6 cm
- 1, 2, 5, 12, 22, 33: Courtesy the artist
and Galerie Max Hetzler, Berlin | Paris |
London
3, 4, 7–11, 13–16, 20, 24, 26, 27, 30:
Courtesy the artist and
Regen Projects, Los Angeles
23, 25, 29, 31, 34: Courtesy the artist
and The Modern Institute,
Toby Webster Ltd, Glasgow